



Parent Handbook

2026



Contents

Sunrise's Start.....	4
School Values	4
Naming of the School	4
The Story Behind Our Logo and Uniform	4
Percent For Art	5
School Essentials	6
General Information	6
2026 Term Dates	6
Public Holidays	6
School Development Days – Students DO NOT Attend.....	6
School Hours	7
Break Times	7
Compass	7
Administration and Enrolments.....	7
Accidents and Illness	7
Enrolments	8
Kindergarten Enrolments.....	8
Late Arrivals	8
Leaving School Early.....	8
Medical Procedures and Conditions	9
Out of School Hours Care	9
Parenting Plans / Court Orders	9
School Payments	10
School Uniforms	10
School Visitors	10
Voluntary Contributions and Charges	10
School Community	11
Assemblies	11
Communication	11
Dental Health.....	12
Kindergarten and Pre-Primary Drop Off and Pick Up.....	12
Kiss and Drive Plan.....	12
Parent Representatives	12
Parent Volunteers	12



Promotion of Alternative Mode of Transport	13
School Board	13
School Health Nurses	13
School Website.....	13
Translation Services	13
Procedures and Policies	14
Attendance	14
Absentee Notification.....	14
Allergies.....	14
Birthday Celebrations.....	15
Behaviour & Bullying.....	15
Concerns.....	15
Dogs and Other Pets on School Grounds.....	16
Emergency Procedures	16
Factions.....	16
Homework.....	16
Kirpans	16
Library	17
Mobile Phones and Electronic Devices.....	17
Recess And Lunch.....	17
Student Dress Code	18
Teaching and Learning.....	18
Givens for a Learning Environment.....	18
Curriculum	18
Reporting.....	19
Personal Requirements List.....	19
Students At Educational Risk (SAER).....	19
SAER Referrals	19
Class Structure	19
Enrichment Programs.....	20
School Map	21



Sunrise's Start

Kaya and welcome to Sunrise Primary School. We are excited that you will be joining our school community. We invite you on a shared educational journey to ensure your child has a smooth transition into our school. A school where they belong, are supported and are ready to RISE and SHINE every day for a better tomorrow.

School Values

RISE Values

SHINE Behaviours

Meaning

Respect

Support and Help Others

Working together so everyone can learn and grow

Inclusive

Everyone belongs, feels valued and supported to succeed

Safe

Inspire

We are safe to dream big

Engaged

Neatness and Excel

We are focused, work with care and aim for our best

Naming of the School

We are very proud of our school's name, and it is central to who we are as a community. In 2025 a series of workshops and a Facebook poll were held with the community to choose the name of our new school using the Department of Education's procedures for naming new schools. Sunrise Primary School was overwhelmingly the most popular name. In addition to tying in with our address on Sunrise Boulevard, the name sunrise evokes warmth and new beginnings.

The Story Behind Our Logo and Uniform

The Sunrise logo captures our school's commitment to provide our community a place where we can all come together and be inspired to be a part of something amazing. The blue light arcs are the five domains that have the greatest impact on student achievement and progress.

- Relationships and Partnerships
- Learning environment
- Leadership
- Use of Resources
- Teaching Quality



The rays of sunshine are our students; each rising alongside each other.

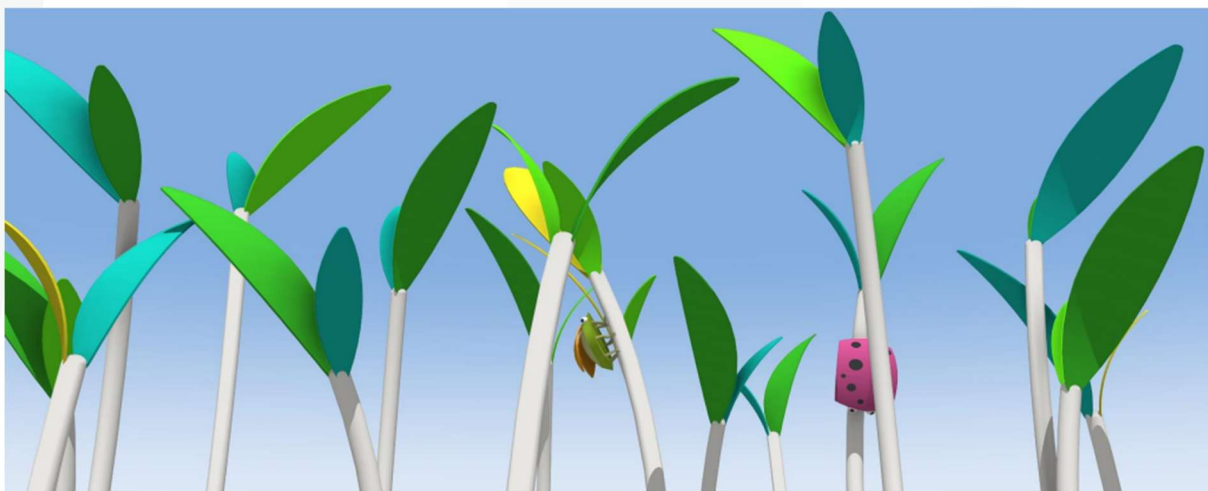


Our school uniform is a one-of-a-kind design. The illustration captures the historical wetlands of Wellard where water, flora and fauna harmonise and provide life. The colours are inspired by the predawn light creating a quiet grace.



Percent For Art

Studio Gamboge collaborated to design and deliver the one percent art project, which each new school receives as part of their build. Their art concept 'Storybook critters, wetlands & silly nonsense!' is a series of artworks that capture playful flora and fauna interactions. Designed to be colourful, engaging, tactile and imaginative they add extra fun to our school environment.



School Essentials

General Information

Address: 273 Sunrise Boulevard, Wellard WA 6170

Telephone: (08) 9414 2073

Email: Sunrise.PS@education.wa.edu.au

Website: www.sunriseprimaryschool.wa.edu.au/

Facebook: <https://www.facebook.com/SunrisePrimarySchool>

Office Hours: 8:00am to 3:15pm

2026 Term Dates

Term One: Monday 2nd February - Thursday 2nd April

Holidays: Friday 3rd April – Sunday 19th April

Term Two: Tuesday 21st April – Friday 3rd July

Holidays: Saturday 4th July – Sunday 19th July

Term Three: Tuesday 21st July – Friday 25th September

Holidays: Saturday 26th September – Sunday 11th October

Term Four: Tuesday 13th October – Thursday 17th December

Holidays: Friday 18th December – Sunday 31st January 2027

Public Holidays

Term 1: Labour Day – Monday 2nd March 2026

Term 2: Anzac Day Public Holiday – Monday 27th April 2026

Term 2: WA Day – Monday 1st June 2026

School Development Days – Students DO NOT Attend

Term 2: Monday 20th April 2026

Term 3: Monday 20th July 2026

Term 4: Monday 12th October 2026



School Hours

Students should not arrive at school prior to 8:20am when the gates will be opened. Once gates open there is more than enough time for students to lock their bike, walk to class and be ready for the first lesson at 8:35am. There is no playing on the playground before and after school for the safety of everyone.

At the end of the day, school gates will close at 3pm except for the gate next to B Block to allow access to our before and after school care program.

Start times / Finish times

8:20am – Gates open

8:25am – Doors open

8:35am – School begins

2:45pm – School Finishes

Break times

Crunch & Sip: 10:00am – 10:05am

Lunch Break: 11:05 – 11:45

Recess Break: 1:15 to 1:35

Break Times

At Sunrise we play first and then eat. Our morning session includes a crunch & sip session during independent tasks. Please ensure that there is sufficient food for lunch, recess and a healthy snack for crunch & sip. Please note that there will not be a canteen operating in 2026.

Compass

Our main communication platform is Compass. Compass allows parents and carers to access up-to-date information about the school and your child's progress. Compass includes many different features, including the ability to:

- Monitor your child's attendance and enter an explanation for absence or lateness
- Communicate with your child's teacher
- View our school calendar
- Download and view your child's academic progress
- Pay and provide consent for events and school fees
- School reports will be sent out via emails and then made available on Connect.

Administration and Enrolments

Accidents and Illness

In the event of your child being sick or having an accident at school, one of the parents or carers listed as Contact #1 and Contact #2 will be contacted. All parents and carers are asked to ensure that the school has an up-to-date contact phone number, address and emergency contact details, so contact can be made without delay. In the event of a serious accident where parents cannot be contacted, an ambulance may be called. The cost for the ambulance is to be met by the family not the Department of Education.



If your child is ill with any infectious conditions, including colds and stomach ailments, they should not attend school and should only return when fully recovered. The risk of cross infection in schools is very high despite the best efforts of staff and students. Our advice for communicable diseases is direct from the Department of Health. When in doubt, please keep your child at home and if necessary, seek medical advice.

Enrolments

Enrolments are processed by the school's administrative team. All information to enrol is found on our website.

Kindergarten Enrolments

Children can start Kindergarten when turning four years old by 30 June of the year they attend, and they are up to date with their immunisations. Applications for enrolment in kindergarten for 2026 are accepted according to the following criteria:

1. Children living in the intake area of the school and have a sibling enrolled at the school
2. Children who live in the intake area but do not have a sibling at the school
3. Children who live outside the intake area of the school and have a sibling enrolled at the school
4. Children who live outside the intake area and don't have a sibling enrolled at the school

Kindergarten is non-compulsory schooling and the enrolment process completed for kindergarten only covers that year.

Enrolments for 2027 Kindergarten will close on Friday 24/07/2026 at 3:00pm.

**** All Kindergarten students must repeat the enrolment process the following year for Pre-primary****

Late Arrivals

Students arriving after 8:35am must report to the Administration Office to be signed in. They will be issued a *Kaya Card*, which must be presented to their classroom teacher. This card confirms that the student has been signed in correctly and ensures the teacher is aware of their arrival, supporting student safety and accurate attendance records.

Leaving School Early

If students need to leave school early, a parent or guardian must attend the Administration Office to sign them out before collecting them from the classroom. A *Boordawan Card* will be issued to ensure the student is released appropriately. In the interests of student safety, only parents, guardians, or individuals listed on the student's emergency contact list will be permitted to collect them.



Medical Procedures and Conditions

Please advise Administration if your child has a medical condition that requires our attention and support. This includes conditions such as asthma, allergies or other medical conditions. It is important that you provide the school with an action plan provided by your family doctor if your child has a known medical condition. A confidential record of students with medical conditions is maintained within our electronic record system to ensure your child is well cared for.

In accordance with the Department of Education policy, parents requiring medication to be administered to their child at school need to complete the necessary Health Care forms at the office. If a child needs to be given medication during school hours, parents/carers will be asked to provide:

- Medication that is labelled with the child's name, in its original packaging and is within expiry.
- Written authorisation for the school to administer the medication using the approved form from the school.
- Any associated medical equipment (it is important to ensure it is supplied in good working order).

It is important that you maintain communication with the school and advise of any changes or concerns you may have. Any changes to medication, requires alteration to these forms as they are a legal instruction to those responsible for administering the medication. Please note that for safety and hygiene reasons, students may not bring any medication or herbal preparations to school to self-administer from their bag. The only medication approved to be kept in bags are asthma puffers or other approved medical necessities such as diabetes equipment.

For a full copy of our Medication Policy please see our website.

Out of School Hours Care

Out of School Hours Care services are provided by OSHClub. Further information can be found on our school website. Enrolling with OSHClub can be completed by visiting the website <https://www.oshclub.com.au/>.

Bookings can be made anytime up to 24 hours before the session commences. Parents should contact the OSHClub Customer Service and Billing Team on 1300 395 735 if they have any questions relating to booking or enrolling in the Sunrise Primary School OSHClub.

Parenting Plans / Court Orders

If you have a parenting plan or court orders relating to your child, please ensure a copy is provided to the school and kept up to date. This helps us support your child's wellbeing and safety. If you have any concerns or would like to discuss your family's circumstances, please speak with the Principal.



School Payments

School payments can be paid via EFPTOS, credit card or direct deposits. Our school management system, Compass, is used for excursions and will also include an option for payment.

Bank Account Details for Payments:

BSB: 066040

Account: 19908307

Account Name: Sunrise Primary School

Reference: Student's full name and subject e.g. JACK BLACK - Swimming

If you are facing financial hardship, please see our Manager Corporate Services who can assist with the setup of a payment plan. Participation of a student in an incursion or excursion is conditional on payment being received by the due date along with permission form submitted through Compass or handed in at the Administration Office.

School Uniforms

School uniforms can be ordered online through our supplier, [Uniform Concepts](#). Alternatively, uniforms can be purchased in-store by visiting the Uniform Concepts Port Kennedy Super Store located at:

4/1 Sunlight Drive,
Port Kennedy WA 6172, Australia
Phone: (08) 9270 4670
Email: portkenedy@uc.nellgray.com.au

School Visitors

All visitors to the school are required to sign in and out through the administration office. An identification sticker will be issued outlining you as a visitor and is required to be worn whilst on school grounds during instructional hours. This is a Department of Education requirement.

Working with Children Check cards are to be provided by anyone over the age of 18 who is not a parent of a student at the school. This includes all grandparents helping within the school community or classroom. An application for a Working with Children Check card can be obtained from Australian Post outlet.

Voluntary Contributions and Charges

The total amount of contributions parents and carers are asked to pay for students at Sunrise Primary School is \$60.00 per child, regardless of which class they are in. This amount is in line with the School Education Regulations 2000. The quality of our teaching and learning program will be maximised when each family makes its contribution to the cost of supplementing funding gained from other sources, including the State and



Commonwealth Governments. It is vital that the parent community support our aim to provide a wide range of high-quality teaching and learning resources for our students.

Payment for voluntary contributions can be made through a variety of ways such as;

- through our personal requirements order,
- through the Administration Office at the beginning of the year or
- pay off over a period of time using a progressive payment options plan.

Charges apply to extra, optional components of educational programs provided in Kindergarten to Year 6. Extra cost options are specific activities, services, or facilities that schools offer students to use or take part in such as excursions. As parents choose for their child to participate in these activities, the associated charge must be paid. Students who do not participate will be provided with an appropriate educational activity at school.

School Community

Assemblies

Assemblies provide the opportunity to celebrate important cultural and community events in addition to individual student awards. A schedule of assemblies will be published in Term Calendars and promoted on Compass.

Communication

We are committed to your child's education and your child's teacher will do their best to make themselves available to talk with you as the need arises. Please make a time to talk to your child's teacher if you have a matter that needs discussing. The start and end of the day are busy times and teachers are often unable to devote the time and attention needed to properly address issues if a meeting time has not been arranged prior. Please make an appointment if you need to speak to your child's classroom teacher. Appointments can be made via the Administration Office or via email.

As a school, we are committed to answering your emails as quickly as possible. Teachers do not have time during the school day to check emails, there is an expectation that emails will be checked by your teacher before the start of the day and then again after school from 2.45 pm. Teachers are not expected to respond to emails outside of the working day (before 8.00am and after 4.00pm during the week). If you need to contact your child's teacher for an urgent matter, outside of the hours mentioned above, please contact the Administration Office.

Our success as a school community centres on the quality of our partnership with students, parents, families and our community. We use Newsletters, Facebook and Compass to provide information to our school community. Facebook is a public page and is used for sharing achievements, events and news with the wider community. Compass is our school management system and is discussed in detail on page 7.



Dental Health

The Schools Dental Service operates from Wellard Primary School and Wellard Village Primary School. The care includes routine dental examinations or check-ups, oral health advice, extractions, fillings, X-rays and fissure sealants. Specialist dental services such as oral surgery and orthodontics are not provided, and patients will be referred for these services. We must have a consent form from parents before children can participate. Parents must also arrange transport. For further information, please telephone the School Dental Service on (08) 9313 0555.

Kindergarten and Pre-Primary Drop Off and Pick Up

Children in Kindergarten and Pre-primary are required to be taken to their classroom in the morning and picked up from the classroom in the afternoon by their parent, carer or nominated adult. Please contact the school if someone other than those listed on the student's details will be picking up your child.

Kiss and Drive Plan

Our designated kiss and drive is located and accessed through the Sunrise Boulevard entrance. A detailed map highlighting the area is located Page 21.

Parent Representatives

Sunrise Primary School values kind and respectful relationships and appreciates the Parent Reps' important role in facilitating communication between parents/carers and the school. Parent Reps are a group of volunteers that represent each class from Kindergarten to Year 6. Their purpose is to,

- promote community and cooperation through communication,
- enhance the quality of relationships between parents/carers, students, and teachers, and
- promote parent involvement as active partners in their child's education.

Please see the Parent Representative Handbook found on our website for more information. If you are interested in being a parent representative, please contact the Administration Office.

Parent Volunteers

Class teachers may request parent/carer assistance in classrooms or with school activities. This help is always very welcome. Watch for items in the school newsletter or in messages from classroom teachers requesting assistance.

Volunteers and visitors are required to sign in at the Administration Office on arrival. Parents/ carers working with children in the classroom, or assisting with excursions, are required to complete a Department of Education Confidential Declaration. This is available at the Administration Office when you sign in. In some cases, there may be a need to obtain a Working with Children Check card (WWCC). Information on these requirements is also available from the Administration Office.



Promotion of Alternative Mode of Transport

As we grow our active community, we would like to inspire more students and families to walk, wheel, scoot or ride to school. Our school has two covered bike racks at each of the main entrances. The footpath on Indigo Bend leads across Sunrise Boulevard to the school carpark which has a pedestrian crossing leading to the bike racks. Please note that there is no traffic warden. For the school to have a traffic warden we need

- at least 200 vehicles using the road within an hour before and after school,
- at least 20 students crossing the road
- submit an application to the Children's Crossings Unit

The Principal will review the road conditions on a regular basis to ensure the safety of students and to see if we meet the threshold for a children's crossing.

School Board

The role of the school board is outlined in the School Education Act 1999. Its role is to provide strategic guidance and monitoring of the school's performance. It supports the school to increase effective autonomy and flexibility to further improve the quality of programs. Our School Board meets each term. Nominations for membership will be called for early in Term One.

School Health Nurses

School health nurses in primary schools are based at Child and Adolescent Community Health (CACH) locations and visit local schools. School health nurses offer a free health check (School Entry Health Assessment) for all children in the year that they start school, helping them begin their educational journey healthy, safe and happy. Once enrolled, we will provide you a School Entry Health Assessment form together with information about the health check.

School Website

Our school website contains all the information that you need to know. It houses our policies, procedures, plans, calendar and news of upcoming events.

Translation Services

Translation services are available for families who require support during meetings or with school correspondence. Our school website can also be translated into your preferred language if required.



Procedures and Policies

Attendance

The School Education Act 1999 requires children of compulsory school age to attend school. When a child is unable to attend, legislation requires that parents/caregivers provide notification providing a reasonable cause for the absence of their child. Notification of absence can be through an email or phone call to the Administration Office or by using the Compass App.

Every day your child learns something new. Every day they build on what they know. What they learn today is the foundation for what they need to learn tomorrow. That's why attending school every day is so important. Research by the Telethon Kids Institute found children who attend every day generally do better at school. The more children attend, the more they learn, the more they achieve. This creates more opportunities for their future

When a student's attendance falls below 90% the school is required to investigate the matter and develop a plan, in consultation with the family, to restore regular attendance. Missing a day each week adds up to over two and a half years missed by the end of their schooling. Everyday counts.

Arriving on time is important for your child too. Being late can impact on their readiness to start their day engaged and ready to learn. Students arriving after 8:35am must collect a *Kaya Card* from the administration office.

To support your child's regular attendance please ensure family holidays occur in the school holiday period. In the event of a holiday during the school term please email the Administration Office (Sunrise.PS@education.wa.edu.au) with start and end dates and reason for the holiday to ensure we need to meet legislative requirements of accurate records of attendance. Our teachers work hard to provide in class education and will not be able to provide additional vacation schoolwork.

Absentee Notification

The school uses and SMS notification for student absentees. The Compass system automatically sends a text message for any unexplained absence. This generally occurs by 10am each school day. If your child will not be at school, please advise us through Compass.

Allergies

At Sunrise Primary School, a core value is to provide a safe environment for all people within our school community. To support this, we are an allergy aware school for the management and prevention of anaphylaxis which can be potentially life threatening. Parents will be advised of specific food allergies within their child's classroom, with an across the school focus on being nut aware.



We encourage parents, children and staff to avoid bringing foods that contain nuts to school. This includes food products such as:

- Nuts
- Peanut butter
- Nut spreads such as Nutella
- Nut bars
- Biscuits or muesli bars containing nuts
- Chocolate or other products that have nuts listed in the ingredients

To reduce risks of an allergic reaction we encourage students not to share foods, staff are trained in anaphylaxis and are aware of students with medical plans in place. Please alert the school to any allergies that your child may have so we can implement the appropriate plan to support them.

Birthday Celebrations

We love to celebrate birthdays, name days or other special occasions. If you would like to send in small cupcakes or treats for your child to share with his/her friends on (or near) their special day, please let your teacher know beforehand. Please be aware of any food allergies within your child's class.

Behaviour & Bullying

At Sunrise Primary School we want to improve student social-emotional and behaviour outcomes by ensuring all students have access to the most effective instructional and behavioural practices and interventions possible. Behaviours will be managed with a positive approach and expectations will be explicitly taught. Communication around behaviour incidents will occur as necessary. Please see the Sunrise Primary School Behaviour Education Policy on our website for more information.

Bullying is an unexpected and unacceptable behaviour within our community. Bullying is an ongoing, repeated and deliberate misuse of power in relationships that is used to cause physical, social and/or psychological harm. If your child is having any difficulties, please see your classroom teacher in the first instance.

Concerns

There may be a time, despite ongoing communication, where members of the school community are unsure, disagree or believe there is a problem or issue concerning their child. Parents/carers are encouraged to raise minor concerns early, before they grow into major ones:

1. If the matter involves your child or is an issue of everyday class operation, parents need to make an appointment to see their classroom teacher, detailing the reasons for the appointment. The classroom teacher should be the first point of contact.
2. If the matter involves operations beyond the classroom or concerns that are not easily resolved, an appointment should be made with a Deputy Principal.



3. If a resolution is not reached, please contact the Administration Office team to make an appointment with the Principal, who will work with the relevant parties to resolve the problem.

Working together with mutual respect, open communication and trust we can resolve concerns in a timely manner.

Dogs and Other Pets on School Grounds

To ensure the safety of all members of the Sunrise Primary School community, we require that dogs and other pets do not enter school grounds, except for service dogs or dogs visiting as part of educational programs with prior approval from the Principal. We appreciate that some families walk to school with their dogs; however, please leave the dogs tethered to posts outside the school grounds away from pedestrian and vehicle traffic areas when taking your child to their classroom. We thank all our parents and community members in advance for respecting these guidelines.

Emergency Procedures

The school has a clearly documented emergency procedure. All staff are taken through these at induction and drills are conducted regularly throughout the school year to ensure that staff and students know what to do in the event of an emergency.

Factions

Students will be allocated a faction colour on enrolment in 2026. The name of our factions will be determined by our inaugural student leaders. Our school hats are reversible and have the faction colour inside. There are no faction shirts in 2026 to reduce the costs on families.

Homework

Recent research shows that homework in primary school has very little direct impact on children's academic achievement. Large studies and reviews, including work by education researcher John Hattie and the UK's Education Endowment Foundation, find that while homework in secondary school can improve learning, the benefits for younger children are minimal. Our Homework Policy outlines our expectations of what parents can do at home to support our learners.

Kirpans

Kirpans, (religious items resembling knives), can be worn at school by baptised Sikh students provided they comply with guidelines for baptised students wearing a Kirpan at school. It would be appreciated for Kirpans worn by any family members be worn under their clothes while on school site.



Library

All classes will have a rostered library borrowing time. Students will receive a library bag as part of their personal requirements list at the start of the year. Books and any other equipment that are damaged or misplaced will be charged to your child's account.

Mobile Phones and Electronic Devices

At all WA public schools, the Department of Education does not permit students to use mobile phones from the time they enter school grounds to the conclusion of the school day when they leave school grounds (off and away all day). As such, children are discouraged from bringing mobile phones and other devices to school.

As a school, we accept some parents/carers are concerned about safety to and from school and provide mobile phones for their children. If parents/carers do decide to provide a mobile phone for their children to use on the way to or from school, then the following expectations must be adhered to in accordance with our whole school Student Behaviour Education Policy:

- All phones and devices are to be switched off and placed in the student's bag before they enter school grounds.
- When students arrive on school grounds, they are to ensure phones are handed in at the Administration Office for safe storage and collected at the end of the day.
- Teaching staff and Allied Professionals are not responsible for collecting or storing mobile phones and devices during the school day.
- The school has no liability should your child's mobile phone or device be lost, damaged or stolen; and
- All phones should have names printed clearly on them.
- Exemptions are made for students who require their phone for medical purposes e.g. diabetes management.

All communication between parents/carers and students during school hours, should occur via the school office. Students are permitted to wear smart watches, however these must be placed in 'aeroplane mode' so that phone calls and messages cannot be sent or received during the school day, this is inclusive of break times where students are not to check for any messages.

Recess And Lunch

At Sunrise PS we play first and then eat with our lunch break being at Break 1. We also have a mid-morning crunch and sip, usually this is a piece of fruit.

Parents/carers make decisions about their own child's diet, food choices and lunchbox. We understand that different children have different dietary requirements, and their lunchboxes will reflect this. It is important to discuss any special requirements with your classroom teachers. If teachers have any concerns, they will contact the parent/carer to discuss. Please provide sufficient food for lunch, recess snack and a piece of fruit or healthy snack for crunch and sip and a water bottle.



Student Dress Code

For a full copy of our Dress Code Policy please see our website. Our Dress Code outlines the standards expected of students and plays an important role in promoting a positive image of our school. Our Dress Code supports all students to participate actively in school life. It also helps us to create a sense of identity and a school culture in which every student experiences a sense of connection and belonging. Our school uniform has specifically been designed to embody our school mission of “creating a connected and inclusive community”.

Teaching and Learning

Givens for a Learning Environment

Three Imperatives for Student Engagement

1. Students are safe, have trust, respect and feel valued
2. Students have learning at their ability
3. Clear and agreed behaviour expectations are taught to all students

Three Pillars of Pedagogy

1. Positive teacher-student relationships
2. Teacher directed learning of new knowledge/skills
3. Evidence based, high impact instructions moving student’s knowledge from short-term to long-term memory

Six Givens for Every Learning Environment

1. Strong Relationships
2. Sense of Belonging to the Learning Environment
3. High Expectations and Excellent Classroom Practice
4. Positive Classroom Tone
5. Excellent Presentation – Uniforms, Bookwork and Organisation
6. Quality and Timely Feedback to Students

Curriculum

At Sunrise Primary School, we provide a high-quality comprehensive curriculum that aligns with the Western Australian Curriculum. The curriculum encompasses English, Mathematics, Science, Humanities and Social Sciences, Health & Physical Education, Technologies, Languages, and The Arts.

Sunrise promotes the consistent use of Explicit Instruction for the teaching of new skills and concepts. Explicit instruction involves teaching students the content or skills to be learned, using clear and unambiguous language. Every program and strategy we use follows the Science of Learning.



Reporting

As part of accountability requirements, regular reporting to parents and feedback on student progress is an important process of our school. A variety of methods are used each term to keep families informed about their child's progress. Parents and carers will receive formal reports in Term Two and Term Four. Parents and carers are encouraged to discuss their child's progress throughout the year by making appointments with their child's teacher.

Personal Requirements List

Personal Requirement Lists for Kindergarten – Year 6 can be found on our school website. Our supplier for stationery is through COS. To support our families and to ensure a smooth start of the school year with all students having access to quality materials, the booklists will be purchased by the school and the costs will then be charged to parents. Bulk purchasing the booklists, through the school, heavily reduces the costs to individual families.

Please ensure all school bags, uniforms, hats, water bottles and lunch boxes are clearly labelled.

Students At Educational Risk (SAER)

We are committed to supporting students at risk and addressing the needs of students as early as possible to ensure that every student achieves to their full potential. The school has established an experienced team to ensure there is a collaborative approach including the development, implementation and monitoring of individual plans addressing each student's specific needs. We are committed with working in partnership with families and external agencies to ensure all students learn and achieve.

SAER Referrals

The school has access to a school psychologist, school health nurse and a student wellbeing officer on a regular basis. Parents may approach the classroom teacher to discuss their concerns and arrange a referral for their child to access these services on a need's basis. All referrals are conducted in consultation with parents.

Class Structure

Due to the size and nature of our growing school, some of our classes will be composite classes. This means that there are two-year levels sharing the same class e.g. Year 5/6. As our student enrolments grow and change, it is likely that we will have several composite classes across the school. Research demonstrates that there are many benefits to students being in a composite class; and through teamwork and positive communication, we can support all our students to successfully transition to their new class.

Composite classes are created on a year-to-year basis, where the need is required. Student placement within upper and lower splits is based on a range of factors including:



- Gender numbers
- Family relations
- Student behaviour
- Academic ability
- Social considerations
- Class recommended numbers

It is important to remember that just because your child might be allocated to the lower year level of the class, it does not mean that he/she is of higher ability and needs extension. Similarly, placement in the higher level of the split does not mean that he/she is of lower ability. It is more important that classes are balanced with a mixture of ability levels rather than all being at the same level.

Teaching has changed significantly in recent decades through a focus on teachers using data to develop whole class, group and individualised 'plan, teach, assess cycles' that meet specific needs across different curriculum areas. Our teachers are skilled in differentiating curriculum delivery and will be provided with ongoing coaching, feedback and support whenever required. In every class, including in single year levels, there is a significant variation in students' knowledge, skills and abilities across all curriculum areas. Teachers are adept at building learning opportunities, based on the curriculum, across multiple year levels. Research by Professor John Hattie indicates that teacher quality, as opposed to whether a class is a straight year level or composite makes a positive difference to the academic outcomes of students

Enrichment Programs

Throughout the year Sunrise Primary School will provide additional enrichment activities for student engagement. Students in Year Four will participate in testing for Primary Extension Academic Challenge (PEAC) (a Department of Education enrichment program). At the school level, students will have the opportunity to engage in sporting, music and robotics club to name a few. All club activities will require parent permission and will be before or after school.

If you have any questions or need assistance, please don't hesitate to contact the school. You can email us at Sunrise.PS@education.wa.edu.au or phone us on (08) 9414 2073. We're here to help!



School Map

